



# CABOOLTURE AERO CLUB

## SAFETY NOTICE TO MEMBERS

SAFETY NOTICE REGISTRATION #

7/25

TITLE

**OBSTACLE ALERT – DECEPTION BAY**

### DETAILS OF HAZARD

A luffing-type tower crane is being installed at 643 – 651 Deception Bay Road Deception Bay, QLD 4508 Wednesday 16 May 2025.

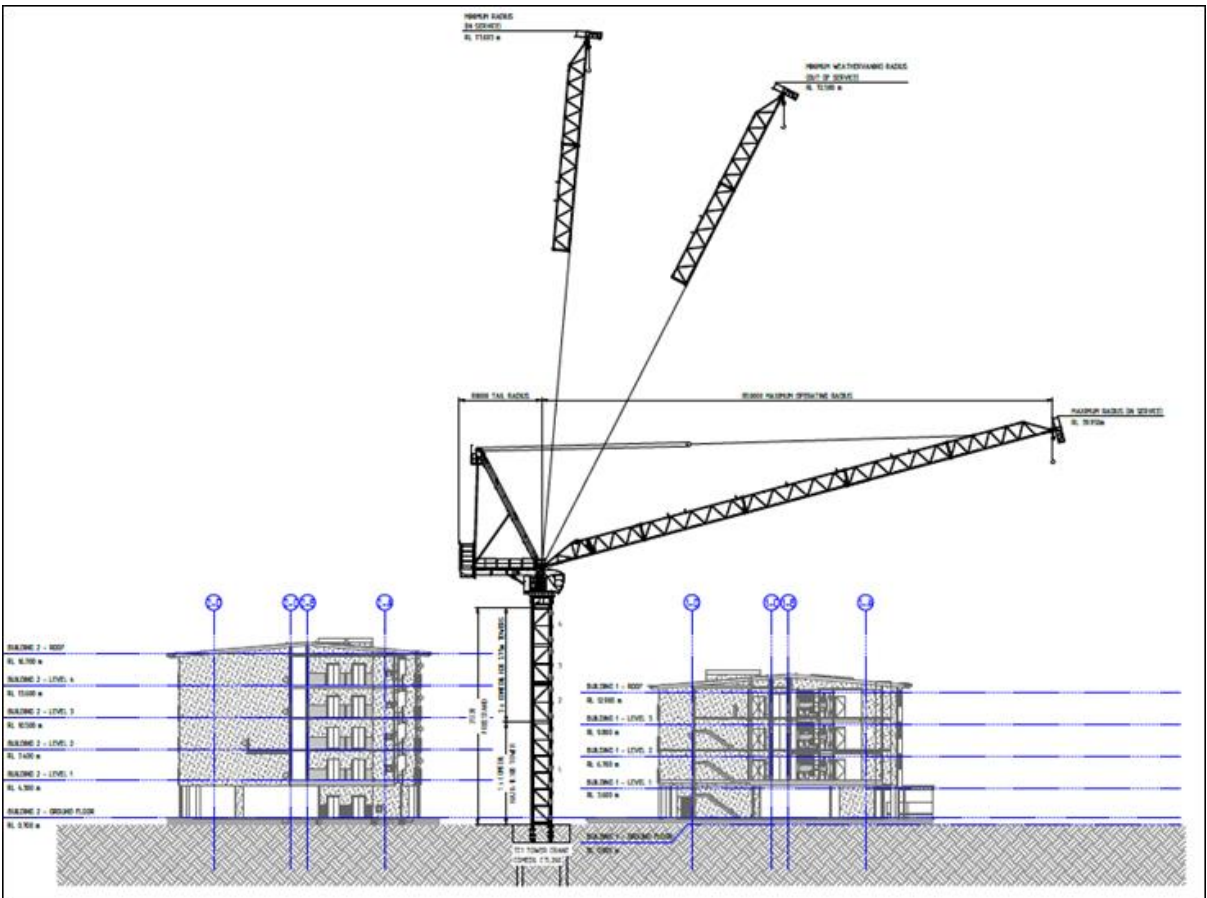
The crane will be up to 77.7 m above ground level.

The crane will operate during the following days and times 6.30am-5.30pm Monday – Friday and 6.30-2.30 Saturday, and will be in location for approximately 12 months.

Following consultation with CASA (Airspace Protection), the following aviation safety measures have been incorporated in the Construction Management Plan that has been approved by City of Moreton Bay:

- The crane is required to be painted in a conspicuous colour such as yellow or red if possible, or otherwise contrasting bands of colours such as red and white.
- The lighting to be installed (at the end of the jib, cabin of the crane, tail of the crane and up the tower of the crane) will be activated during hours of the operation with at least the highest light to be operational outside of operational hours.
- The crane is to be set to the lowest permissible weather vaning height when not in use.
- A photo of the installed crane will be provided once available.

Note: It was accepted that it was not practicable to install a hammerhead tower crane (which would not have extended to the same vertical extent as a luffing-type crane).



## POSSIBLE CONSEQUENCES

- Collision Risk

## REPORTING

Any concerns, please email [secretary@cacq.com.au](mailto:secretary@cacq.com.au) & [fsag@cacq.com.au](mailto:fsag@cacq.com.au)

## MITTIGATION ACTION

This notice is intended to advise pilots that this hazard exists.

**Caboulture Aero Club Committee**

**4 MAY 2025**